

---

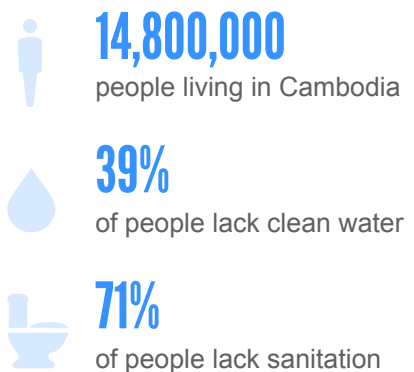


## Hi David and friends at FGI Finance, you funded a project in Cambodia.

The water project you funded in the Fall of 2011 is now in the construction and community engagement phase. Here's a summary of the progress we've made so far and some information about the country you're helping. Thanks so much for your patience and support. We're excited to share the exact details of your project with you in the coming months once it's completed!

### COUNTRY OVERVIEW.

Cambodia has plenty of available groundwater; the problem is that not much of it is safe enough to drink. Most ponds or open wells are contaminated with industrial run-off, human waste or contaminants like arsenic and E. coli bacteria. Here, we're investing your funds to bring clean water to households and communities.



### PROJECT OVERVIEW.

Region: **Pursat**  
Project Type: **New Hand-Dug Well**  
Estimated People Served: **250**  
Implementing Partner: **Concern Worldwide**  
Status: **In Progress**  
Estimated Completion: **Early 2013**

### WHAT IS A HAND-DUG WELL?

Hand-dug wells are possible in areas with a high water table. Under the supervision of skilled engineers and masons, the community typically contributes time and labor, sometimes digging for up to three months to reach water.

### THE COMMUNITY ENGAGEMENT PHASE.

Our local partner will form and train a local Water and Sanitation Committee (WATSAN) on best sanitation (use of latrines), hygienic practices, safe water storage and water point management. These efforts instill a sense of ownership and responsibility for the project.